
WILSON COUNTY GIS WEBSITE USER GUIDE

Table of Contents

Default Map Actions 2

Search..... 3

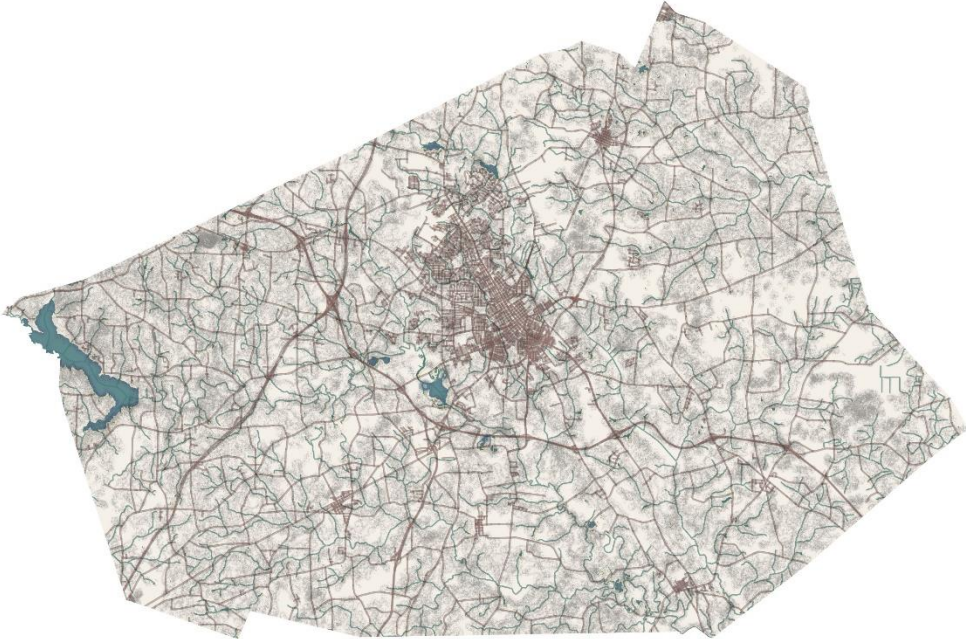
Layers..... 4

Basemaps 5

Downloads 5

Hyperlinks..... 6

Toolbar 6



WILSON COUNTY GIS WEBSITE USER GUIDE

Default Map Actions

This table contains a few default map actions available in the Wilson County web map along with their corresponding results.

These behaviors are enabled automatically when the map loads and no button additional action is required to activate them. These actions are always available when the map is in use.

Action	Result
Single left mouse click	Identify features
Double left mouse click	Zoom in one map level
Left click, hold and drag	Pan map
Shift + left click, hold and draw rectangle	Zoom in to area covered by rectangle
Ctrl + Shift + left click, hold and draw rectangle	Zoom out based on size of rectangle

Search

The Wilson County GIS web map uses various searches to obtain data from the map.

Users may search the contents of the layers in the map using one of available search fields.

The various search types are separated into different search groups i.e. “Parcel Search” or “Address or Street Search”. Users may search known data, by entering text in the corresponding search box and clicking ‘Search’ or hitting the ‘Enter’ key.

Enter parameters in one search box at a time for the best results.

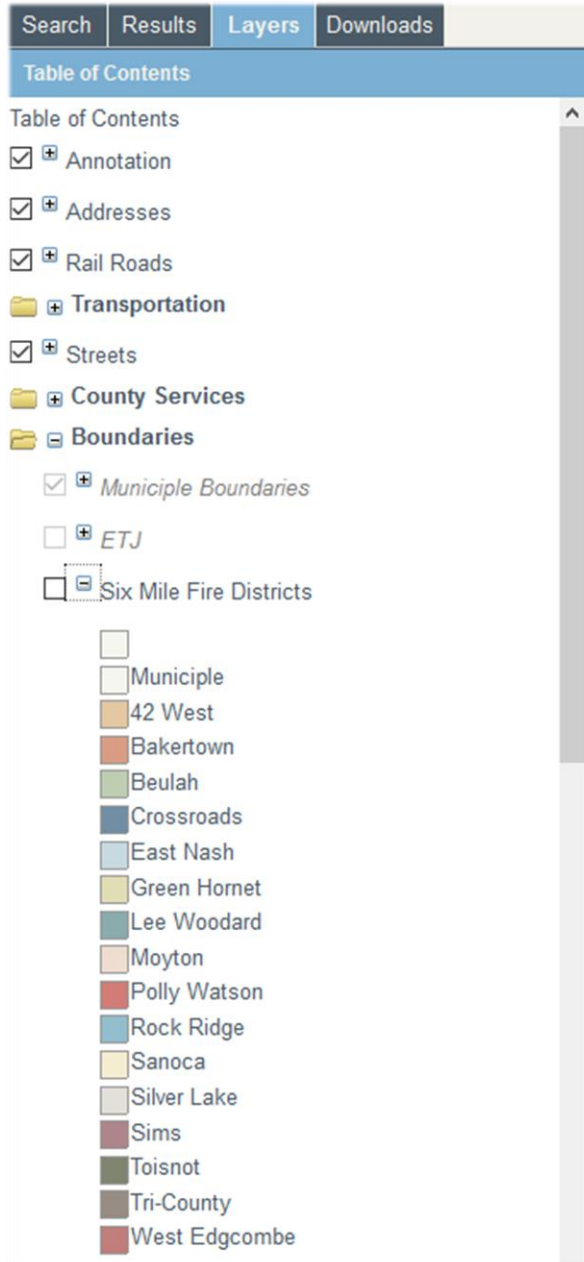
Results will automatically appear on the “Results” tab when utilizing a search or the Identification Tool. If multiple search results return, click an entry to zoom the map to desired result. To return to the search results, click on the “Results List” tab. If only one search result is returned, the map will automatically zoom to the result.

Multiple Search variables may be used within the Advance Parcel Search and Sales Search to filter results.

- Please Note that all parcel searches use data as listed within the Tax Parcels layer. Any descriptors or data must match the data contained within those layers for accurate search results.
- Address searches use data contained within the address point file. Any desired tax parcel data such as ownership, derived from the underlying land, must be identified using the Identify Tool.

The screenshot shows the search interface of the Wilson County GIS web map. At the top, there are four tabs: 'Search', 'Results', 'Layers', and 'Downloads'. Below the tabs is a 'Parcel Search' section. This section contains four search categories, each with a text input field and a 'Search' button. The categories are: 'Enter PIN or Parcel Number' (with examples: 'ex. XXXX-XX-XXXX.000 or XXXXXXXXXXXX.xxx'), 'Enter Owner Name' (with example: 'ex. Smith John'), 'Deed Reference' (with sub-inputs for 'Book' and 'Page', and example: 'Book/Page'), and 'Plat Reference' (with sub-inputs for 'Book' and 'Page', and example: 'Book/Page'). Below the 'Parcel Search' section, there are three more search categories: 'Address or Street Search', 'Advanced Parcel Search', and 'Sales Search'.

Layers



Layers are depictions of similar features that are grouped together such as zoning, streets, or address points. Layers can be explored via the 'Layers' tab.

Layers may be activated and deactivated by clicking the "check" within the selection box to the left of the layer name.

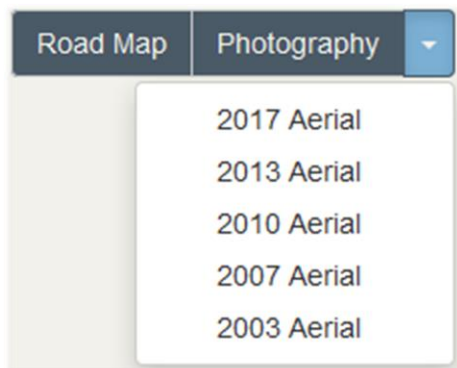
If the box is checked the layer will draw on the map.

If a layer name is italicized and grey, it has a scale dependency. A scale dependency will automatically draw the layer on the map when the map is at the scale set on the individual layer.

If the layer does not draw, zoom in or out on the map until the layer name turns black. To view how the layer is symbolized on the map, click the plus button to expand the symbology. Symbology is how the layers data would appear on a map legend.

Basemaps

A basemap is depicts background reference information such as landforms, roads, landmarks, and imagery, onto which other thematic map data is placed.



A basemap is used for locational reference.

“Road Map” is automatically activated by default at the opening of the map and allows for a quicker loading time for the Web Map.

“Photography” is the aerial imagery basemap used for viewing the map data within the context of the land and feature around it. Aerial files are large data files and may take a few seconds to load. Please wait for

the aerials to load before switching between the historical aerial photos that are located within the Photography tab.

Downloads



The “Download” tab is located within the search pane. By default, the download tab only lists data for Addresses, Tax Parcels, and Streets. The links located within the download tab to direct the user to the data provided via the Wilson County GIS Open Data page. From this page the data may be filtered and downloaded in CSV, KML, or Shapefile format. GIS Rest services and APIs are also available on this site.

For additional datasets, please visit:

<https://county-data-wilsoncounty.opendata.arcgis.com/>

Hyperlinks

Tax Parcels

- [Tax Records](#)
- [Tax Year Deed Records](#)
- [Plat Reference](#)
- [Sales History](#)
- [Building Photos](#)
- [Property Report](#)

Some layers contain links to related data reports and websites. Wilson County is not responsible for any errors contained within the data and information shown on other sites. As always primary sources should be consulted for verification of information depicted on this website.

- [USDA Soil Survey of Wilson County\(May 1983\) PDF](#)
- [USDA Soil Survey Home Page](#)

Toolbar

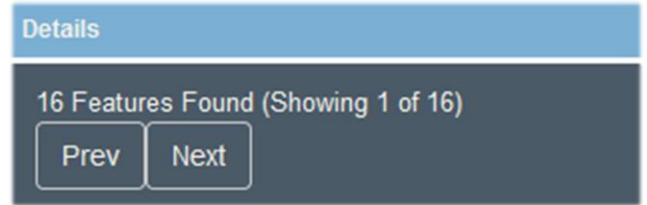
The toolbar offers the user navigational and analytical tools for use within the map document. Please note the numbered list of tools below along with the corresponding item number in the toolbar graphic.

To activate all tools, first click on the tool icon to activate, then click on map or feature to navigate or to return results.



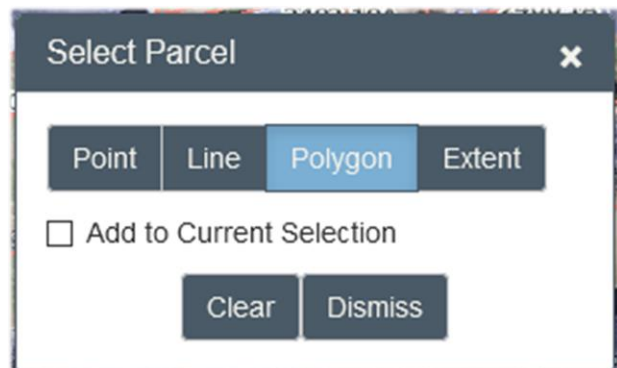
1. Zoom In on map area
2. Zoom Out on map area
3. Zoom to Full Extent of map
4. Pan map
5. Previous/Next Map View

6. **Identify Features** – Click on the icon to activate the tool, then click on feature to be identified. If multiple features or layers are contained within the identified area, a dialogue box will appear within the “Details” frame allowing the users to view all identified features in that area allowing for the user to determine the appropriate information.



- Please note that layers must be activated and visible to be identified. If the layer is activated but the layer description is grey, the layer is not viewable at that scale. The user must zoom in or zoom out to the applicable scale to make the layer visible.
- When performing an address search please note that to identify tax parcel information, the user must use the identify tool and click on the underlying parcel in order to obtain the tax data.

7. **Select Parcel** - Click on the icon to activate tool, then click on parcel to be selected, then use the point, line, or polygon, or extent option to draw an area or line that may select one or more parcels and return their results in the table on the left.



8. **Buffer Features** - Click on the icon to activate tool, then enter the parameters within the “Buffer” pane to include the area for which the search buffer is to be performed. The user can select feet or miles as the buffering unit. Results are returned within the “Results” pane. Buffer searches may be refined filtering the results by attribute.

9. **Google Street View Tool** - Click on the icon to activate tool, then click on a street centerline at the point of the desired Google Street View. This tool will open a new browser tab showing the most recent street image from Google. The date of imagery will vary by area.

- Please note that to open a new tab containing Google Street View, the browser used must allow for “pop up” windows.
- All Google Street View imagery and content is provided by Google Maps/Google Earth and is not verified by or affiliated with Wilson County or Wilson County GIS. By accessing, downloading, or using Google Maps/Google Earth, you are agreeing to all terms or service agreements, or privacy policies set forth by Google Maps/Google Earth.

Buffer

▼

Zoom To

Select the layer you would like to search

▼

PIN

Owner Name

Fair Market Value (Current Tax Year)

min

to

max

Deeded Acreage

min

to

max

Actual Year Built

min

to

max

Sales Price

min

to

max

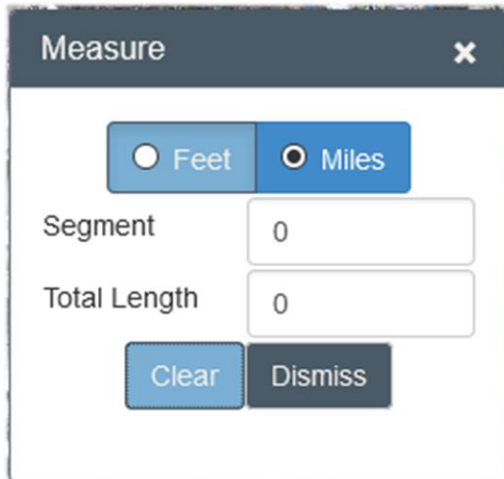
Date Last Sold

from Date

to

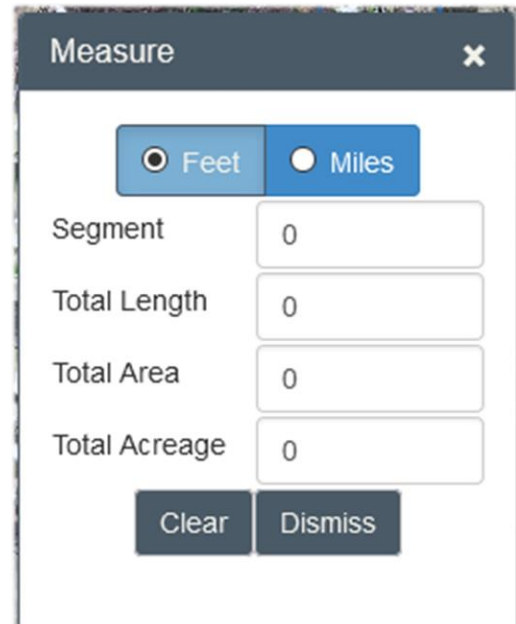
to Date

Search
Reset



10. Open Measure Toolbar (Distance) - Click on the icon to activate tool, next click on the point on the map to start measuring and double click to complete your measurement. Measurements can be computed in feet or miles. When measuring multiple segments, each mouse click will begin a new segment for measurement.

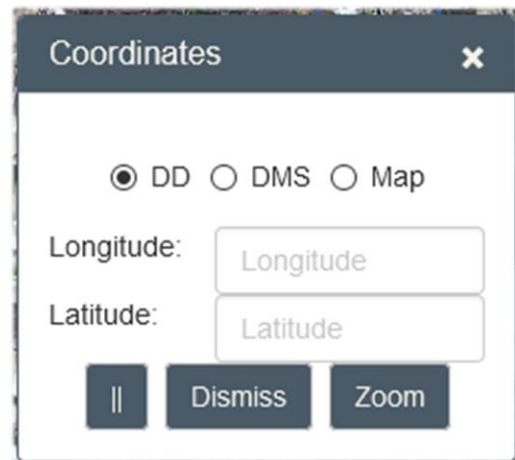
11. Open Measure Toolbar (Area) - Click on the icon to activate tool, next click on the point on the map to start measuring for area and double click to complete your polygon for measurement. Measurements can be computed in square feet or square miles, in addition to acres. When measuring multiple segments, each mouse click will begin a new segment for measurement.



12. **Zoom to Coordinates Tool** - Click on the icon to activate tool, then enter any known coordinates using Latitude and Longitude, Degrees, Minutes and Seconds, or X, Y coordinates.

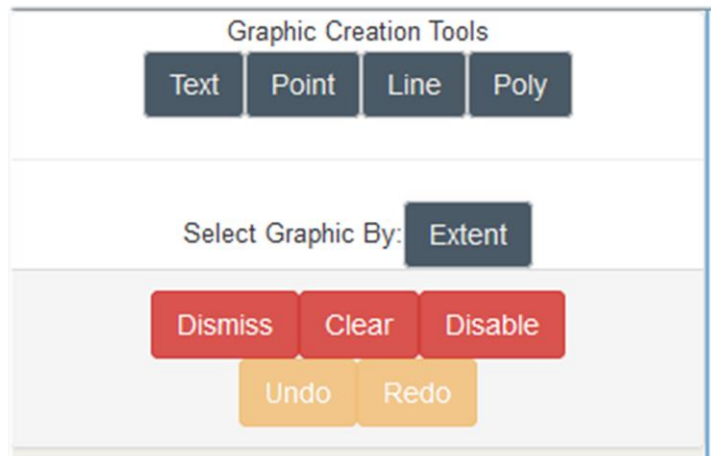
- Unknown coordinates may be derived by hovering over the point or area of the desired coordinates, and noting the Latitude and Longitude computed by the map and shown in the bottom left hand corner of the map.

Map Scale: 1 inch = 6,400 feet
Long: -78.094 Lat: 35.626
Long: 78°05'37" Lat: 35°37'33"



13. **Activate Draw Toolbar** -

Click on the icon to activate tool. Within the Graphic Creation Tools pane on the left-hand side, choose which type or types of graphic are to be drawn on the map. Click on the map at the desired point to start drawing and double click to complete drawing. Text is added to the map in the same manner.



- Graphics produced using the Activate Draw Tool will appear on maps printed from using the Print Icon.

14. **Clear Map Graphics** - Clears all Map Graphics and Query Entries from map

15. **Open Print Dialog** - Click on the icon to open print dialog, choose desired layout, enter map name if desired, choose the document format, confirm desired map extent click, and finally export map. The map PDF will open in a separate window.

Print

Choose the layout: Landscape (No Report)

Enter Map Title: Wilson County

Choose the Output Format: PDF

Print Extent: Entire Map Extent Specific Map Scale

Please enable popup for this site in order to see print output.

For PDF output you need to have the adobe acrobat reader installed.

Export Map Dismiss

- Please note pop up blockers must be disabled for Print Dialog. If the Print Dialog does not appear, check for a blocked pop-up message in the browser.

For additional information please contact the Wilson County GIS office at

(252) 399-2846 or gismaps@wilson-co.com

The GIS office is located at 2201 Miller Road S.

Wilson, NC 27893.